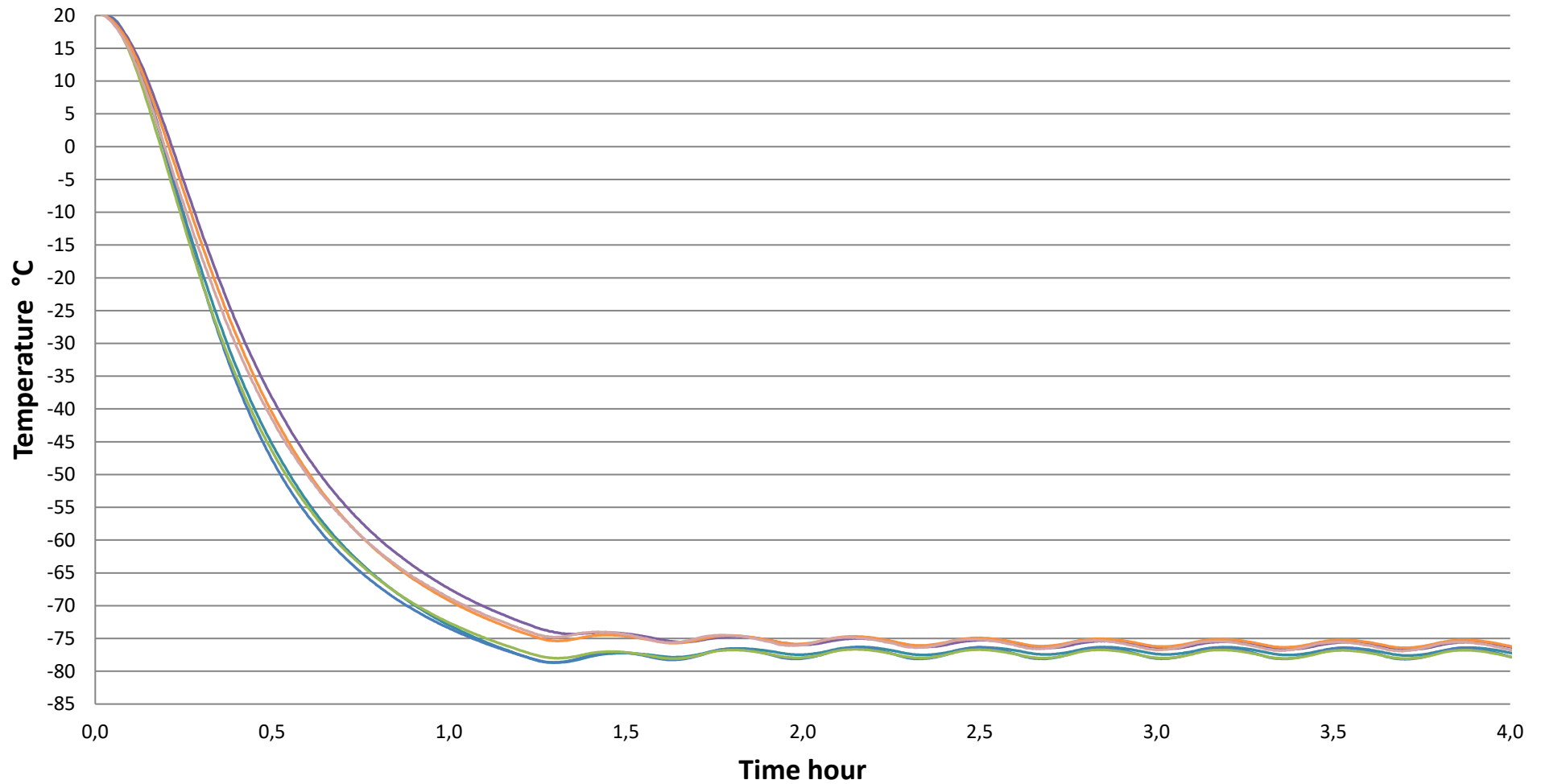


# VT78 Pull down - Empty

Ambient = 20°C , Set Point = - 82, Humidity = 60%



- Back in the left side at the bottom
- Front in the right side at the bottom
- Center at the middle
- Back in the left side at the top
- Front in the right side at the top
- Center at the top

## Pull down test from ambient temperature – VT 78

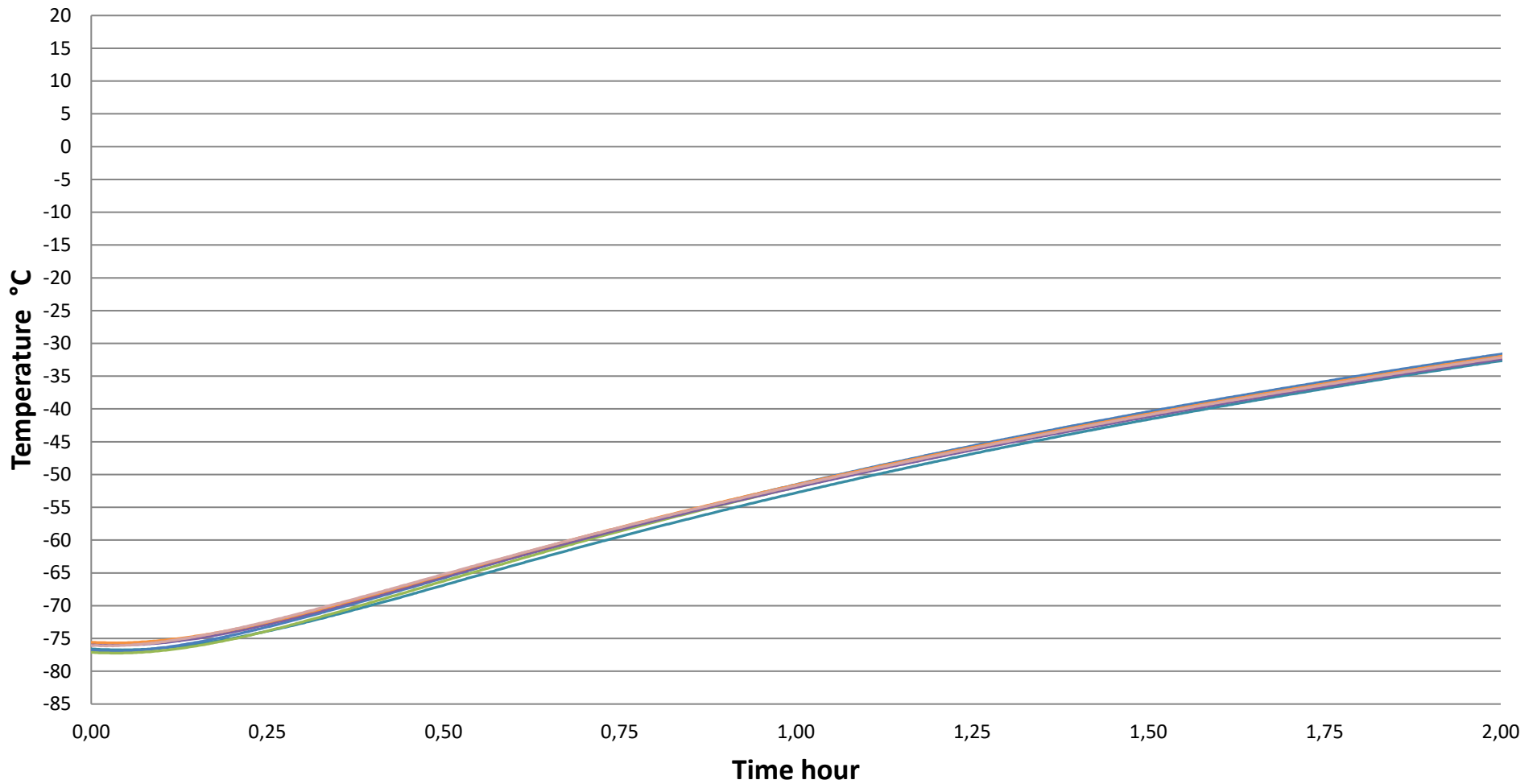
### Test Conditions:

Model:	VT 78
SN:	43718948
Test environment:	Controlled conditions
Ambient temperatur:	+20°C ± 1°C
Ambient humidity:	60% ± 5%
Temperature set-point in cabinet:	-82°C
Cabinet load:	None
Door openings:	None
Sensors used:	25g tinned brass formed as a cylinder with diameter of 15.2mm
Sensors position:	9 points measure distributed diagonal in the cabinet layers. Sensors a placed with one in front where the door opens, one in the middle and one in the back opposite of the front sensor
Installation:	Appliance installed according to the instruction manual condition
Refrigerant:	125g Nature R

### Result of test:

Starting at ambient temperature, the set point was reached after 105min.

**VT78 Hold Over - Empty**  
**Ambient = 20°C , Set Point = - 82, Humidity = 60%**



- Back in the left side at the bottom
- Front in the right side at the bottom
- Center at the middel
- Back in the left side at the top
- Front in the right side at the top
- Center at the top

## Hold over time from -82°C to -60°C – VT 78

### Test Conditions:

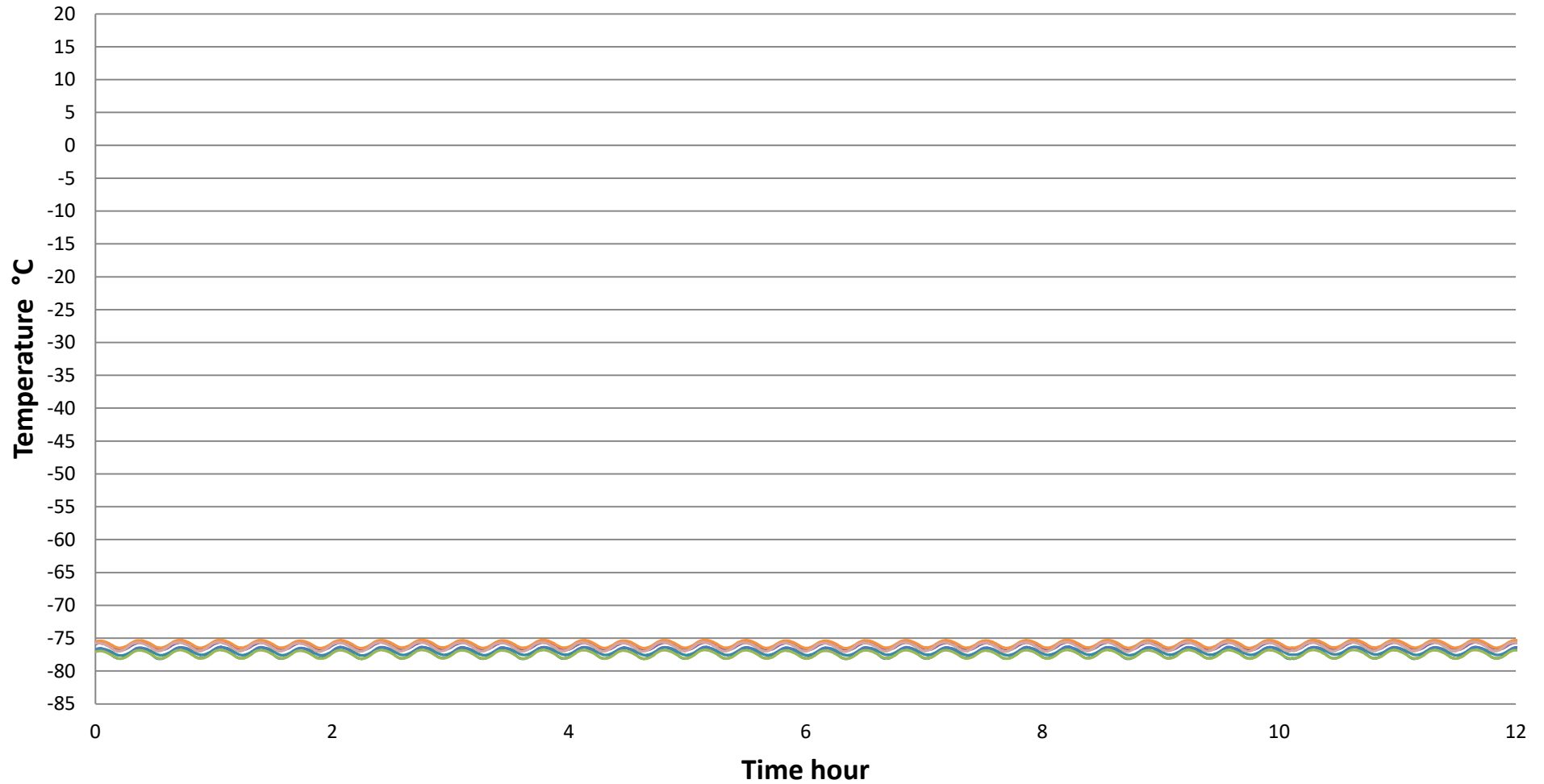
Model:	VT 78
SN:	43718948
Test environment:	Controlled conditions
Ambient temperatur:	+20°C ± 1°C
Ambient humidity:	60% ± 5%
Temperature set-point in cabinet:	-82°C
Cabinet load:	None
Door openings:	None
Sensors used:	25g tinned brass formed as a cylinder with diameter of 15.2mm
Sensors position:	9 points measure distributed diagonal in the cabinet layers. Sensors a placed with one in front where the door opens, one in the middle and one in the back opposite of the front sensor
Installation:	Appliance installed according to the instruction manual condition
Refrigerant:	125g Nature R

### Result of test:

Starting at set point temperature, the temperature rise above -60°C between 38min and 45min.

### VT78 Cyclic Operation - Empty

Ambient = 20°C , Set Point = - 82, Humidity = 60%



Back in the left side at the bottom    Front in the right side at the bottom    Center at the middle  
Back in the left side at the top    Front in the right side at the top    Center at the top

## Cyclic operation 24 hour – VT 78

### Test Conditions:

Model:	VT 78
SN:	43718948
Test environment:	Controlled conditions
Ambient temperatur:	+20°C ± 1°C
Ambient humidity:	60% ± 5%
Temperature set-point in cabinet:	-82°C
Cabinet load:	None
Door openings:	None
Sensors used:	25g tinned brass formed as a cylinder with diameter of 15.2mm
Sensors position:	9 points measure distributed diagonal in the cabinet layers. Sensors a placed with one in front where the door opens, one in the middle and one in the back opposite of the front sensor
Installation:	Appliance installed according to the instruction manual condition
Refrigerant:	125g Nature R

### Result of test:

At an ambient temperature at 20°C, the energy for 24 hour is 5,087 kWh.

The temperature difference between top and bottom is 5,2°C