



VF EMS SYSTEM

RTMD/EMS SYSTEM

Electronic thermostat with built-in datalogger, GPS and remote temperature data log via GSM. 5" touch display with access to various actual temperatures, datalog, and diagnosis.
Solar powered including datalog of voltage from PV cells.

Watch our EMS video here: [EMS FEATURES & FUNCTIONS](#)



SPECIFICATIONS

| | |
|-------------------|---|
| Display | 5" touch screen |
| Temperature range | -25°C to +85°C |
| Accuracy | ±0.5°C from -10°C to +85°C |
| Battery Backup | 72 hours |
| Sim Card | Supplied with global sim card |
| Sim Card optional | Can be supplied with local sim card (limited to specific countries) |
| Voltage range | 10-45VDC |
| IP rating | 54 |
| Type | Integrated in lid of VLS appliance |

| SENSORS | | DATA LOGGER | |
|-------------------------|-----|-------------------------|------------|
| Vaccine compartment 1 | YES | Temperature data | 5 |
| Vaccine compartment 2 | YES | Temperature reports | 30/60 days |
| Freezer (if applicable) | YES | Solar voltage | YES |
| Ice bank | YES | Compressor state on/off | YES |
| Ambient | YES | Lid Status/Alarm | YES |
| Compressor | YES | GPS coordinates | YES |
| Lid opening | YES | SMS/Email alarms | YES |
| Battery | YES | | |

FEATURES

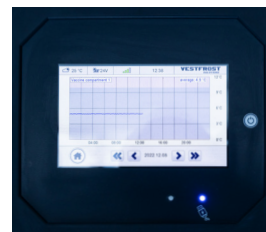
- Realtime temperature and functionality monitoring
- Setpoint settings showed in onlined dashboard
- Option to remote control unit setpoints
- 4 internal temperature sensors
- 1 ambient sensor
- Open lid sensor
- Remote alarms
- 24/7 GSM connectivity
- PV Solar Panel output sensor
- Compressor temperature sensor
- 1 x USB energy harvesting option charging e.g.phone
- Will inform health staff when weakly/monthly maintenance is required



Password access



Remote alarm logs



Real time temperature monitoring



GPS coordinates & GSM connectivity