



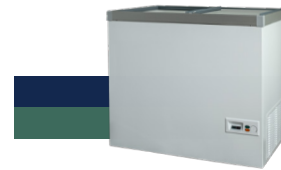
FOOD

DFG275

CHEST FREEZER

The DFG series consist of storage freezers with sliding glass lid for optimum display. The cabinet is designed to endure being opened frequently each day while still maintaining the correct temperature for the storage of frozen items of food.

-16°C
-19°C



DIMENSIONS		VALUE
Dimensions		905x930x610
Packaging dimensions		960x965x710 HxWxD mm
Weight		54 / 51
STORAGE		VALUE
Volume		265 / 210
No. of baskets		0 no.
COOLING SYSTEM		VALUE
Refrigerant / amount		R600a / 90g
Temperature class		4L1
Energy consumption		2,334 kWh/24h
Noise		38 dB
Voltage		220-240 V
Frequency		50 Hz
Temperature range		-16 to -19 °C
Energy class		C
FEATURES		VALUE
Defrost tray		No
Lid color/type		Glass
Light inside lid		No
Cabinet color		White
Inside color/material		Grey / Alu
Lock		Yes
Electronic display		No
PACKAGING ITEM WEIGHT		VALUE
Carton weight		1,44 kg
Eps weight		0,8 kg
Wood weight		0 kg
Plastic weight		0,4 kg